



MATERIALS SOLUTIONS

OVERVIEW

MATERIALS SOLUTIONS

Facility Locations



ASTEC DO BRASIL

Products - Stationary



Hydra- Jaw Series
2238-3244-3450



SBS Cone Series
38-44-52



Vibro-King Series
Several sizes – 2/3 decks

ASTEC DO BRASIL

Products - Stationary



High Freq Screens
612-618-624 Sizes
1/2/3 decks



Vertical Shaft Impactor
Std-Semi Autog-Autog
2500



Vibrating Grizzly Feeders
Several sizes

ASTEC DO BRASIL

Products - Stationary



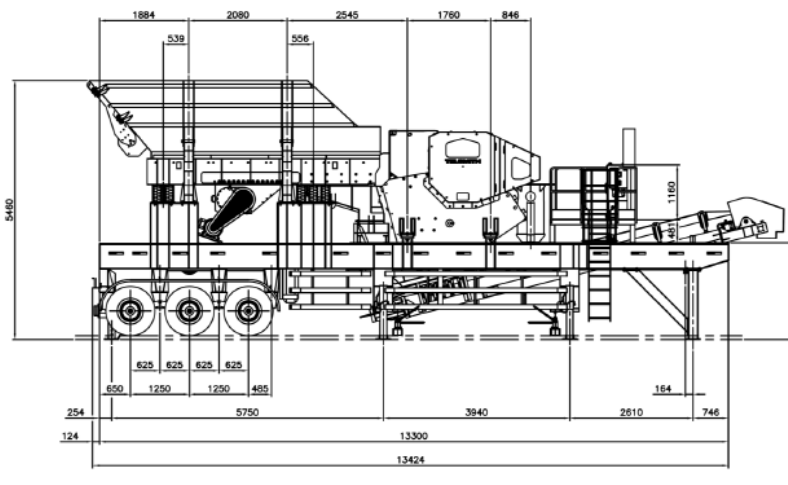
Under pile feeders
Several Sizes



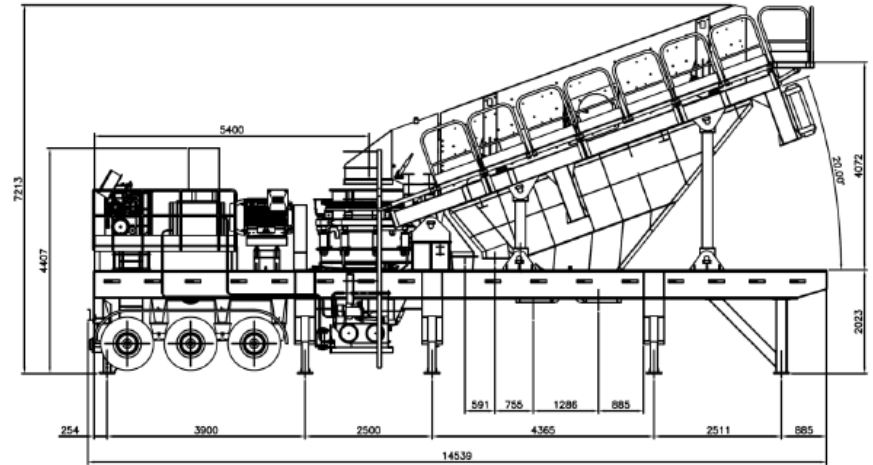
Stationary plants
Complete

ASTEC DO BRASIL

Products - Portable



Jaw Crusher
CMH2238-CMH3244



Cone Crusher&Screen
CM38SBS-CM44SBS

ASTEC DO BRASIL

Products - Portable



ASTEC DO BRASIL

Products - Portable



CONE CRUSHERS

Kodiak Plus



Model	Head Diameter		Weight		Capacity	
	Inches	Millimeters	Pounds	Kilograms	TPH	MTPH
K200+	40	1,016	33,500	15,196	385	349
K300+	45	1,143	45,500	20,639	460	417
K350+	48	1,219	47,975	21,761	506	459
K400+	54	1,372	58,600	26,580	625	567
K500+	60	1,524	75,500	34,247	830	753



CONE CRUSHERS

Titan



Model	Head Diameter		Weight		Capacity	
	Inches	Millimeters	Pounds	Kilograms	TPH	MTPH
T200	36	915	22,000	9,979	288	259
T300	44	1,120	35,800	16,239	510	462
T400	52	1,321	51,800	23,496	657	594
T500	57	1,450	75,100	34,065	840	760



IMPACT CRUSHERS

Horizontal



Model	Rotor Diameter		Rotor Width		Weight		Capacity	
	Inches	Millimeters	Inches	Millimeters	Pounds	Kilograms	TPH	MTPH
2421	24	609	21	533	3,170	1,440	50	45
2430	24	609	30	762	3,500	1,590	70	63.5
3136	31	787	36	914	5,800	2,631	175	159
3646	36	914	46	1,168	14,000	6,350	250	227
4240	42	1,067	40	1,016	24,500	11,113	250	227
4250	42	1,067	50	1,270	28,200	12,792	300	272
5260	52	1,321	60	1,524	43,000	19,505	450	408
PA6060	59	1,500	59	1,500	61,000	27,700	600	545



IMPACT CRUSHERS

Vertical

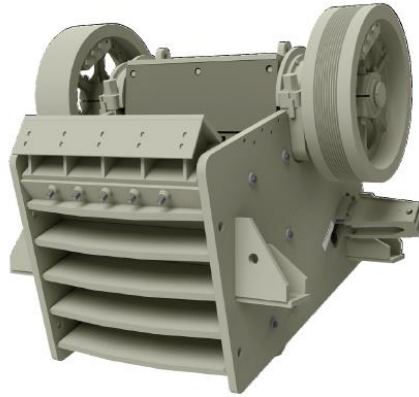


Model	Feed Tube Diameter		Weight		Capacity	
	Inches	Millimeters	Pounds	Kilograms	TPH	MTPH
1500EV	8.5	216	13,200	5,987	75 - 150	67 - 135
2500EVT	11.4	290	18,600	8,437	150 - 300	135 - 267
3500EVT	14	356	24,000	10,886	250 - 400	227 - 356
4500EVT	16	406	30,400	13,789	300 - 500	267 - 445



JAW CRUSHERS

Pioneer



Model	Gap		Width		Weight		Capacity	
	Inches	Millimeters	Inches	Millimeters	Pounds	Kilograms	TPH	MTPH
2742	27	685	42	1,067	29,500	13,381	228–300	20–272
2650	26	660	50	1,270	32,000	14,515	268–325	243–295
3055	30	762	55	1,397	50,000	22,680	502–660	455–599
3365	33	838	65	1,651	63,000	28,576	761–969	692–882



JAW CRUSHERS

Iron Giant



Model	Gap		Width		Weight		Capacity	
	Inches	Millimeters	Inches	Millimeters	Pounds	Kilograms	TPH	MTPH
4448IG	44	1,118	48	1,219	126,000	57,154	700 – 1,030	636 – 936
5060IG	50	1,270	60	1,524	191,000	86,638	1,065 – 1,400	968 – 1,273

JAW CRUSHERS

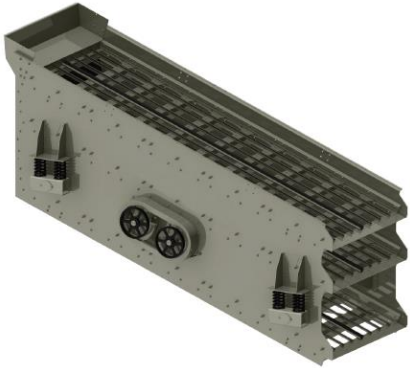
Hydra-Jaw



Model	Gap		Width		Weight		Capacity	
	Inches	Millimeters	Inches	Millimeters	Pounds	Kilograms	TPH	MTPH
2238H	22	559	38	965	22,750	10,319	220 - 370	200 - 336
3244H	32	813	44	1,118	42,100	19,097	325 - 530	295 - 481
3450H	34	863	50	1,270	61,345	27,825	456 - 688	407 - 614

INCLINE SCREENS

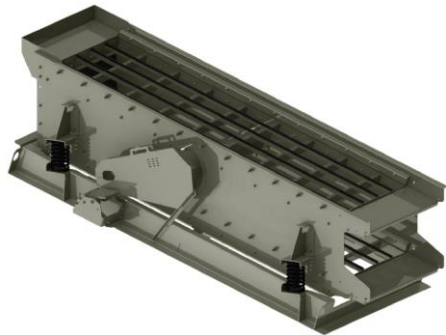
Vibro-King



Models	Decks	Width		Length		Power Required		Weight		Bearing Size
		Feet	Millimeters	Feet	Millimeters	HP	kW	Pounds	Kilograms	Millimeters
5' Screens	2 - 4	5	1,520	12 - 16	3,660 - 4,880	25 - 40	19 - 30	13,455 - 21,192	6,103 - 9,613	130 - 160
6' Screens	2 - 4	6	1,830	16 - 20	4,880 - 6,100	25 - 40 x 2	19 - 30 x 2	14,863 - 29,865	6,742 - 13,524	130 - 160
7' Screens	2 - 4	7	2,130	20	6,100	20 x 2 - 40 x 2	15 x 2 - 30 x 2	26,410 - 40,969	11,979 - 18,583	130 - 200
8' Screens	2 - 4	8	2,430	20 - 24	6,100 - 7,320	25 x 2 - 50	19 x 2 - 37	28,363 - 49,855	12,865 - 22,614	130 - 200
Mine Duty	2 - 3	8	2,430	20 - 24	6,100 - 7,320	25 x 2 - 40 x 2	19 x 2 - 30 x 2	31,954 - 41,613	14,494 - 18,875	160

INCLINE SCREENS

Value-King



Models	Decks	Width		Length		Power Required		Weight		Bearing Size
		Feet	Millimeters	Feet	Millimeters	HP	kW	Pounds	Kilograms	Millimeters
3' Screens	1	3	910	6	1,830	5	3.7	878	398	61.9
4' Screens	1 - 3	4	1,220	8 - 14	2,430 - 4,270	7.5 - 15	5.5 - 11	4,310 - 8,180	1,955 - 3,710	90 - 110
5' Screens	2 - 3	5	1,520	12 - 16	3,660 - 4,880	10 - 25	7.5 - 19	5,400 - 9,730	2,449 - 4,413	90 - 110
6' Screens	3 - 3	6	1,830	16	4,880	25 - 30	19 - 22	7,660 - 10,650	3,475 - 4,831	110

HORIZONTAL SCREENS



Model	Speed	Maximum Stroke		Maximum Feed		Size Range	Maximum Feed	Decks
	RPM	In.	mm	In.	mm	Feet	Meters	
"QF" Four-Deck Screen	775 - 975	0.5	12.7	8	203	6 x 20	1.8 x 6.1	4
"LP" Low-Profile Screen	675 - 875	0.75	19	10	254	5 x 14 up to 8 x 24	1.5 x 4.3 up to 2.4 x 7.3	2 to 3
"MS" Medium Scalper	675 - 875	0.75	19	14	355	5 x 16 up to 8 x 20	1.5 x 4.9 up to 2.4 x 6.1	2 to 3
"HS" Heavy Scalper	575 - 775	0.875	22.22	18	457	5 x 14 up to 8 x 20	1.5 x 4.3 up to 2.4 x 6.1	2

HIGH FREQUENCY SCREEN



High Frequency		Speed	Slope	Size Range		Decks
Type	RPM			Feet	Meters	
Vari-Vibe	4,200		38° - 45°	3 x 3 up to 6 x 24	0.9 x 0.9 up to 1.8 x 7.3	1 to 4

SCALPING SCREEN

Grizzly



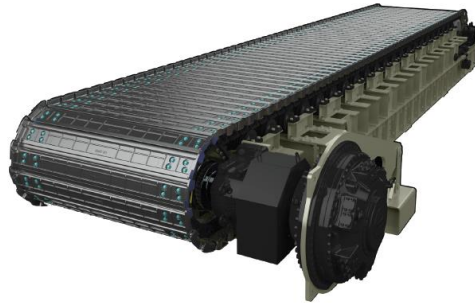
Models	Number of Decks	Number of Shafts	Width		Length		Power Required		Bearing Size
			Feet	Millimeters	Feet	Millimeters	HP	kW	Millimeters
4102-26	2	1	4	1,220	10	3,050	25	19	130
5122-32	2	1	5	1,520	12	3,660	30	22	160
5162-26-2	2	2	5	1,520	16	4,880	25x2	19x2	130
6122-32	2	1	6	1,830	12	3,660	40	30	160
6162-26-2	2	2	6	1,830	16	4,880	30x2	22x2	130
7162-32-2	2	2	7	2,130	16	4,880	30x2	22x2	160



FEEDERS



Grizzly / Pan



Apron



Grizzly / Pan

Plants



Mobile



Portable



Stationary - Modular

WASHING AND CLASSIFYING



Log Washers



Fine-Coarse Washers



Tanks



S&W Plants



Series 9000 Plants



Dewatering Screen



MATERIAL HANDLING



Radial Stackers



SuperStackers



Transfer Conveyors



Stationary Conveyors



Feed Systems



Truck Unloaders

THANK YOU!!

