

# MAGNETICS

DIVISION \GRYB



RAILWAYS



RECYCLING



SEPARATION



HANDLING



MINING INDUSTRIES



The MAGNETICS division specializes in the creation and manufacture of magnets and electromagnets that are specially designed to increase productivity and facilitate work in each of the industries we work with. We offer solutions for handling, cleaning, separation, etc.

All solutions are perfectly adaptable to the machinery and the specific requirements of contractors, as well as the numerous custom projects for which we are known.





PC Series

# SCRAP MAGNET

## POWERGRIP

SORTING, CLEANING AND HANDLING FOR SCRAP YARD

### DEEP-FIELD DESIGN

- HEAVY-DUTY STEEL CASING
- OFFERS AN EXCEPTIONAL CAPACITY-WEIGHT RATIO
- PERFECT COMBINATION WITH A GRAPPLE

- Standard size from 36", 40", 48", 57" and 63" available at all times
- Custom design available
- Aluminum coil
- H-class insulation



### AVAILABLE ATTACHMENTS

- Dangling female coupler
- Rigid female coupler for magnets
- Universal attachment for grapples
- Chains (included)
- Special attachments available on request
- Optional teeth system available (ideal with top plate)





## **POWERGRIP MAGNETS**

**PowerGrip magnets are designed and manufactured following the highest industry standards to meet the growing demands of the market.**

**The competitive price and light weight of these magnets makes them an excellent choice to perform your daily tasks in the scrapyards and will complement other equipment such as grapples.**





**XG Series**

# SCRAP MAGNET XTREMGRIP

HANDLING AND LOADING FOR SCRAPYARD, STEEL PLANT,  
AND PORT OPERATIONS

## EXTRA DEEP-FIELD DESIGN

Depending on the application, several sizes are available, between 68" and 96".

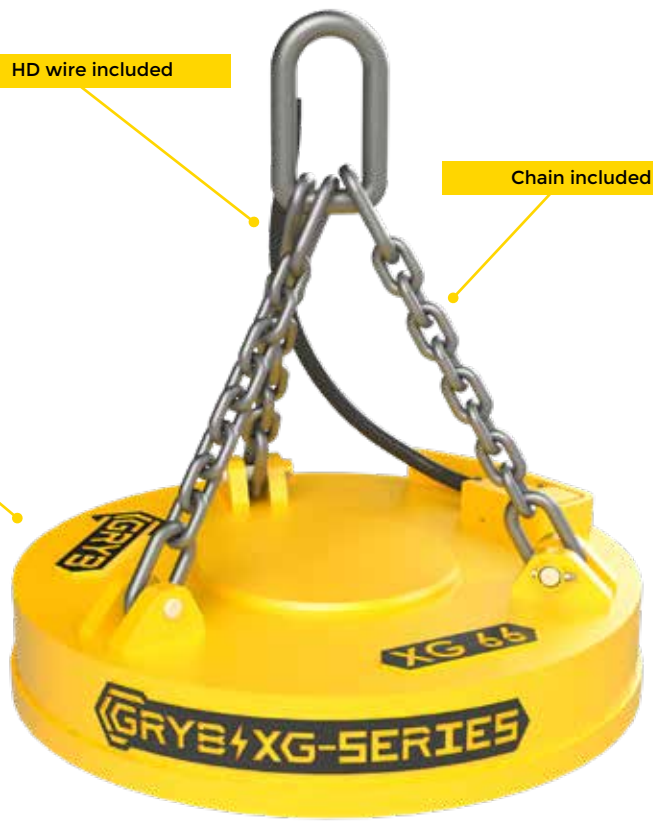
- **ROBUST FABRICATED STEEL CASING**
- **IDEAL FOR SEVERE-DUTY OPERATIONS**
- **H-CLASS INSULATION**

- **Optimized power-weight ratio**
- **Optional teeth system available**  
(Ideal with top plate)
- **Increased performance**
- **Greater lifting capacity**
- **Heavy-duty chains and cables included**

Robust design

HD wire included

Chain included





## **XTREMGRIP MAGNETS**

**Ideal for intensive loading and unloading of scrap metal, for handling works, for steelworks, as well as for port operations.**

They are designed and manufactured for severe-duty operations in handling scrap metal.

The deep-field and robust design makes these magnets very powerful and durable.

## **AVAILABLE ATTACHMENTS**

- Dangling female coupler
- Rigid female coupler for magnets
- Chains
- Custom attachments available on request



WARRANTY

2  
YEARS

HYDMAG Series

# HYDRAULIC MAGNET

PERFECT FOR YOUR DEMOLITION PROJECTS

Several types of attachments available



Built with XG or PG magnet



## EASY TO INSTALL

EASY TO SWITCH FROM ONE MACHINE TO ANOTHER, ONE MAGNET IS NOT DEDICATED TO ONLY ONE MACHINE.

## OPTIONAL FAST WIRELESS OR SOLID WIRE DEMAGNETISATION.

## INDEPENDANT SYSTEM

HYDMAG magnets are an important asset to any demolition equipment fleet. This unit is completely independent.

The generator is installed directly onto the magnet. Once the hydraulic hoses are connected to the excavator, you are ready to work.

The optional DMAG allows for a quick demagnetisation of the magnet.



**BM Series**

# BATTERY MAGNET

PERFECT FOR LIGHT SCRAP METAL HANDLING DUTIES



- NO GENERATOR NEEDED
- EASILY ADAPTED TO YOUR MACHINE
- MAGNETS OF 28 IN AND 48 IN CAN BE USED WITH 12 V OR 24 V WITHOUT A LOSS OF STRENGTH
- POWERED BY YOUR EQUIPMENT BATTERIES
- IDEAL FOR RAILWAY REPAIR OPERATIONS

Several types of attachments available

- HMI included
- Chains included
- 80 or 100-amp controller
- Operator control with pedal



## AVAILABLE OPTIONS

- Joystick
- Extra controller for multiple equipments
- Battery pack
- Conversion from 12 V to 24 V
- Several types of attachments
- Teeth solution

Due to their ease of installation, our magnets can be installed on various machines by simply adding a controller to the equipment.





MH Series

# HANDLING MAGNETS

SECURES, FACILITATES, AND DECREASES HANDLING PROCESSES



## COMPLETE TAILORED SOLUTIONS

- COPPER OR ALUMINUM WOUND MAGNET AS REQUIRED
- INSTALLATION ON MOUNTING BRIDGE, FORKLIFT, OR ANY OTHER HANDLING MACHINE

## INTELLIGENT CONTROLLERS

Controls are state-of-the-art with intelligent controllers linked to an HMI screen.

It is also possible to know the weight of the load lifted by each magnet in real time.





- Complete engineering service
- Hot work design available
- Controller and battery backup management
- Electro-permanent magnets
- Magnet improvement
- Magnet repair

## CUSTOM DESIGN

**GRYB MAGNETICS** has the expertise to manufacture steel handling magnets in various forms, tailored to your needs.

**GRYB's** strength lies in its innovative features as well as its creativity to meet the needs of clients.

Whether you're handling plates, loads of tubes, load of rods, rollers, or any other steel product, we have the solution.

## CPMAG Series



# PERMANENT MAGNETIC SEPARATOR CONTINUOUS CLEANING

THE CPMAG SERIES IS THE MOST ECONOMICAL IN TERMS OF SELF-CLEANING SEPARATORS.

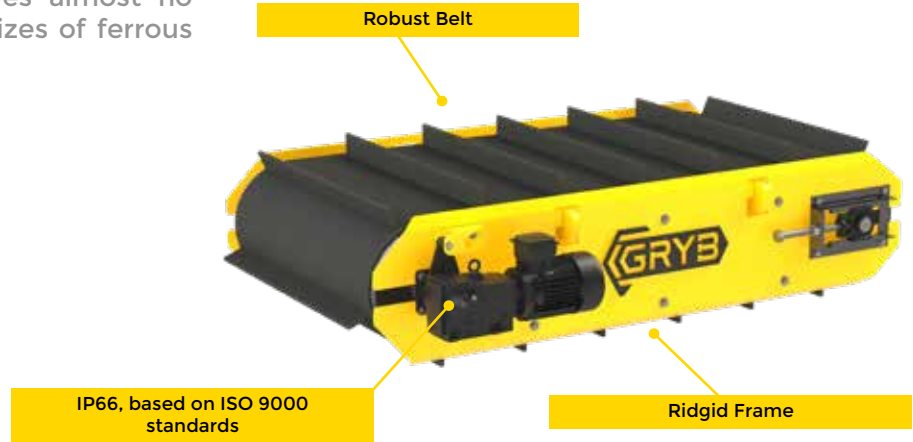
CPMAG series is designed for intensive use and for handling a high volume of materials.

Easy to use, the separator requires almost no maintenance and can capture all sizes of ferrous particles at a moderate distance.

SUSPENSION HEIGHT UP TO 12"

### AVAILABLE OPTIONS

- OVERSIZED COMPONENTS
- MANY BELT OPTIONS
- SEVERE SERVICE
- HYDRAULIC MOTORIZATION
- WEAR PLATE
- CHOICE OF MOTOR VOLTAGE



## PMAC Series



# PERMANENT MAGNETIC SEPARATOR MANUAL CLEANING

IDEAL FOR MINES, AGGREGATES, CRUSHED STONE, WOOD MILLS, MRF, STEEL SHREDDERS, USED SOIL PROCESSING, AND FOUNDRIES

Ideal for protecting equipment and handling low volumes of iron.

- NO OPERATING COST
- NO DC POWER REQUIRED
- MAINTENANCE FREE
- SUSPENSION HEIGHT UP TO 12"

### AVAILABLE OPTIONS

- WEAR PLATE
- CLEANING SYSTEM



## CEMAG Series



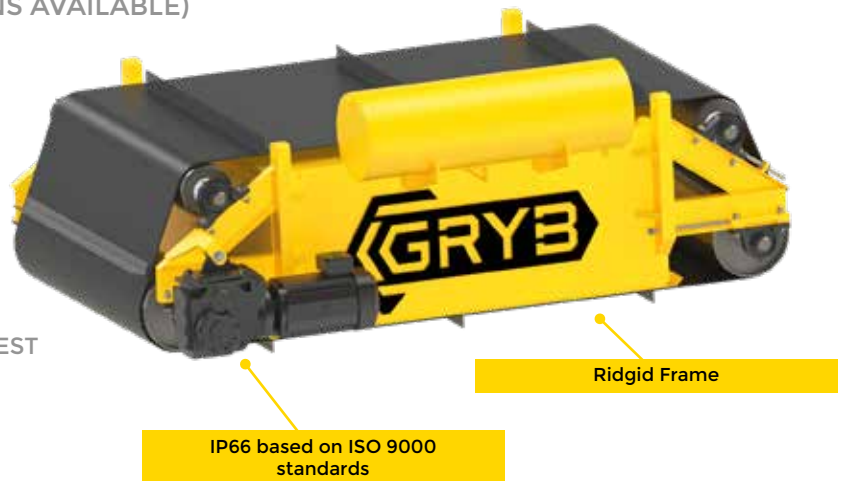
# ELECTROMAGNETIC SEPARATOR CONTINUOUS CLEANING

THE CEMAG SERIES IS THE MOST EFFICIENT IN TERMS OF SELF-CLEANING SEPARATORS.

- ALUMINUM WINDING WITH HIGH QUALITY NOMEX INSULATION
- WIDE RANGE OF AVAILABLE POWER: 3 KW TO 45KW
- BELT WITH 2 INCH CLEATS (OTHER OPTIONS AVAILABLE)
- OIL COOLED WITH EXPANSION TANK
- DIRECT DRIVE CLASS II MOTOR
- HEAVY-DUTY STEEL CASE
- 100% DUTY CYCLE

### AVAILABLE OPTIONS

- MANY BELT OPTIONS
- WEAR PLATES
- SPECIFIC MOTOR BRANDS AVAILABLE ON REQUEST
- BELT PRESENCE DETECTION
- HYDRAULIC MOTORIZATION
- CHOICE OF INPUT VOLTAGE
- 100 VDC OR 230 VDC OUTPUT VOLTAGE
- OVERSIZED COMPONENTS FOR MINING APPLICATIONS



## EMAG Series



# ELECTROMAGNETIC SEPARATOR MANUAL CLEANING

Featuring a machine-off cleaning mode, the EMAG series is designed to handle small volumes of iron.

- ALUMINUM WINDING WITH HIGH QUALITY NOMEX INSULATION
- WIDE RANGE OF AVAILABLE POWER: 3 KW TO 45KW
- HEAVY DUTY STEEL CASE
- 100% DUTY CYCLE

### AVAILABLE OPTIONS

- WEAR PLATES
- 100 VDC OR 230 VDC OUTPUT VOLTAGE
- CHOICE OF INPUT VOLTAGE



## POMAG Series



# PERMANENT MAGNETIC PULLEY

MAGNETIC PULLEYS ARE INSTALLED ON NEW OR EXISTING CONVEYORS TO TRANSFORM THEM INTO SELF-CLEANING SEPARATORS. OPTIONAL DEFLECTOR AVAILABLE TO COMPLETE THE SYSTEM.

- RESISTANT STAINLESS STEEL ENCLOSURE
- 100% DUTY CYCLE
- CONTINUOUS MAGNETIC FIELD
- NO OPERATING COST
- CUSTOM SHAFT DIMENSIONS
- MAINTENANCE FREE
- DIAMETER CAN BE CONFIGURED UP TO 48 IN.
- LENGTH CAN BE CONFIGURED UP TO 96 IN.
- EXCELLENT RETURN ON INVESTMENT
- AVAILABLE IN RARE EARTH MAGNET CONFIGURATION FOR EVEN MORE POWER



## DMAC Series

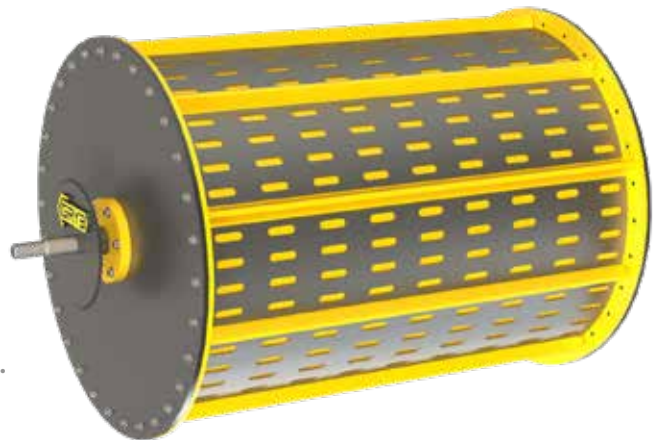


# PERMANENT MAGNETIC DRUM

GRYB'S MAGNETIC DRUMS ARE DESIGNED TO SEPARATE HIGH CONTENT OF FERROUS MATERIALS FROM NON-FERROUS MATERIALS. DRUMS ARE DESIGNED TO PROCESS HIGH VOLUMES OF MATERIALS WITH MINIMAL MAINTENANCE.

### “DEEP FIELD” DESIGN

- LOW OPERATING COST
- CUSTOM DIMENSIONS
- 100% DUTY CYCLE
- RARE EARTH MAGNET
- LENGTH CAN BE CONFIGURED UP TO 96 IN.
- DIAMETER CAN BE CONFIGURED UP TO 36 IN.
- MANGANESE WEAR PLATES
- EXCELLENT RETURN ON INVESTMENT
- CUSTOM SHAFT DIMENSIONS



# PERMANENT MAGNETIC SWEEPER

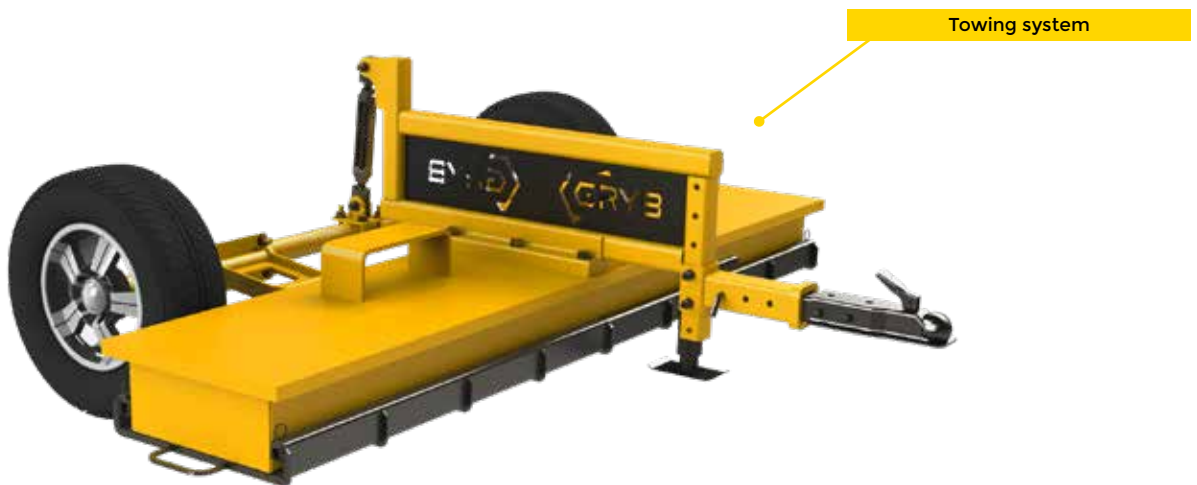
IDEAL FOR FACTORIES, AIRPORTS, MINES, SAWMILLS, AND SORTING CENTERS.

THE AIB SERIES IS BUILT TO CLEAN WORK AREAS.

EASY TO USE, THE SWEEPER REQUIRES NO MAINTENANCE AND CAN CATCH ALL SIZES OF FERROUS PARTICULES AT AN IMPRESSIVE DISTANCE, PREVENTING DAMAGE TO VEHICLES AND TO WORKERS.



- RESISTANT STEEL ENCLOSURE
- 100% DUTY CYCLE
- NO OPERATING COST
- STAINLESS STEEL CLEANING SYSTEM
- SUSPENSION HEIGHT: 4"-6"
- NO ELECTRICAL MAINTENANCE
- OPERATING SPEED : UP TO 18 MPH
- REMOVES UNDESIRABLE TRAMP METAL FROM WORK AREAS
- PREVENTS DAMAGE TO VEHICLES
- IMPROVES WORKPLACE SAFETY
- TOWING OPTION AVAILABLE
- CUSTOM WIDTH



# HYDRAULIC GENERATOR

This generator, equipped with a controller, is designed to be very compact. The available hydraulic power potential on the machine provides the power to operate the electromagnet.

A dedicated pump for the generator is installed on the machine to avoid flow fluctuations, function downturn, and uneven traction problems. These issues are observed when a priority valve is being used. The controller allows for rapid magnetization and demagnetisation of the electromagnet.

## INTELLIGENT CONTROLLER

WE ALSO OFFER A HIGH-PERFORMANCE INTELLIGENT CONTROLLER FOR GENERATORS TO REPLACE THE OUTDATED MECHANICAL CONTROLLERS.

- SAFE AND COMPACT
- DEDICATED PUMP FOR GENERATOR
- CONTROL VALVE FOR GENERATOR (USE ONLY WHEN NEEDED)
- ALL INSTALLATION CABLES
- HYDRAULIC PISTON MOTOR
- FOOT SWITCH INCLUDED

## CUSTOMIZED PROGRAMMING

(6 DEFAULT MAGNETIZATION MODES)

- EQUIPMENT FAILURE DETECTION
- HMI FOR LIVE VISUALIZATION OF EQUIPMENT PERFORMANCE
- AVAILABLE IN 9, 15, 20, AND 30 KW



DGEN Series

# DIESEL GENERATOR

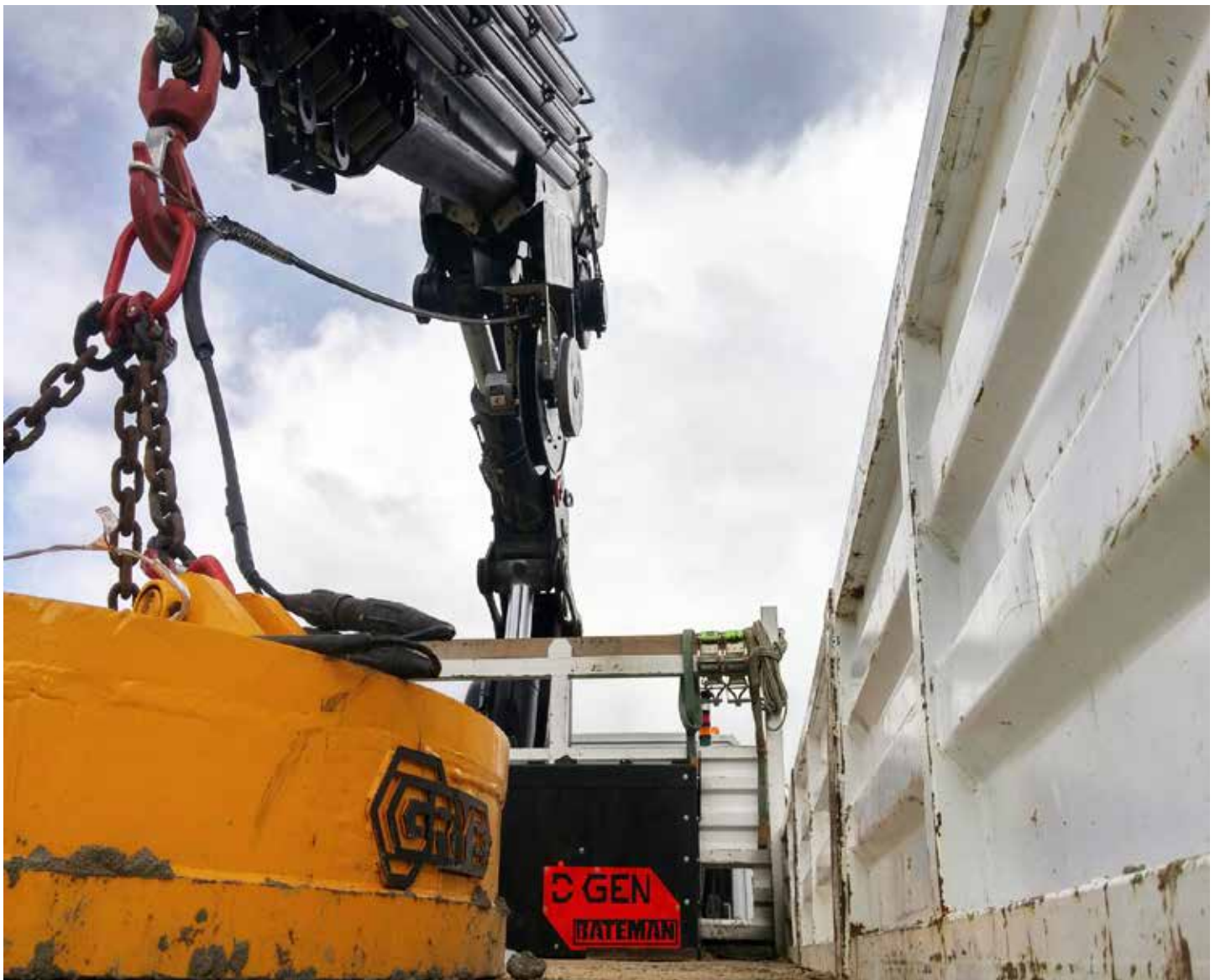
WARRANTY

1  
YEAR

The Bateman Engine Drive Magnet Generator comes fully assembled and ready for installation on your machine.

## INSTALLATION KIT INCLUDES

- HMI cable
- Magnet cable
- HMI controller and clipper switch for magnet activation







GMD Series

# MAGNETIC BUCKET

MAGNETIC TOOTH BUCKET



**MAGNET COMPLETELY INTEGRATED TO YOUR TOOTH BUCKET DIG, SORT, DEMOLISH, AND MAGNETIZE WITH ONLY ONE MULTI-PURPOSE TOOL.**

- IDEAL FOR DEMOLITION WORK
- AVAILABLE FOR EXCAVATORS RANGING FROM 16 TO 90 TONS.
- AVAILABLE IN 230VDC OR 24VDC VERSIONS
- FULLY PROTECTED SUPPLY WIRES



Ideal for sorting material with a thumb





PHM Series

# HYDRAULIC PULVERISER

DEMOLITION TOOL



**CRUSHING POWER UP TO 150 tons!**

**High performance cylinder with high-speed valve with a cycle time of less than 6 seconds (optional).**



Available with or without electromagnet

- Several types of interchangeable teeth
- Available with or without rotation
- 5 models available
- Optional magnet (24v or 230v)
- Ranging from 10 to 50 tons

Specifications

## ELECTROMAGNETS

SCRAP MAGNET

Powergrip



MODEL NUMBER	DIAMETER (IN)	AMPERAGE	VOLTAGE (VCD)
PG30	30	21.5	230
PG36	36	27	230
PG40	40	38	230
PG48	48	45	230
PG57	57	58	230
PG63	63	82	230

Specifications

## ELECTROMAGNETS

SCRAP MAGNET

Xtremgrip



MODEL NUMBER	DIAMETER (IN)	AMPERAGE	VOLTAGE (VCD)
XG68	68	88	230
XG72	72	115	230
XG78	78	125	230
XG87	87	150	230
XG96	96	180	230

Specifications

## ELECTROMAGNETS

HYDRAULIC MAGNET



MODEL NUMBER	DIAMETER (IN)	AMPERAGE	VOLTAGE (VCD)
HYDMAG-PG36	36	22	230
HYDMAG-PG40	40	34	230
HYDMAG-PG48	48	38	230
HYDMAG-PG54	54	55	230
HYDMAG-XG60	60	61	230
HYDMAG-XG66	66	80	230

Specifications

## ELECTROMAGNETS

BATTERY MAGNET



MODEL NUMBER	DIAMETER (IN)	AMPERAGE	VOLTAGE (VCD)
BM28A	28	85 / 42	12 OR 24
BM32A	32	85 / 42	12 OR 24
BM36A	36	40 / 80	24
BM40A	40	40 / 80	24
BM48A	48	50 / 100	24

\* Other models and shapes available on request.

\* Indicated weights exclude female couplers.

POWER (KW) REQ.	WEIGHT (LB)	HMS1	HMS2	TURNINGS
5	1,050	400	300	120
6.2	1,350	725	475	250
8.8	1,940	900	600	350
10.4	2,900	1,900	1,200	600
13.3	4,220	2,850	1,800	950
18.9	5,630	3,800	2,400	1,150

POWER (KW) REQ.	WEIGHT (LB)	HMS1	HMS2	TURNINGS
20	6,600	4,600	3,000	1,450
26.5	8,300	5,200	3,150	1,550
28.75	10,300	5,700	3,800	2,000
34.5	16,200	-	-	-
41.4	18,800	-	-	-

GENERATOR POWER	WEIGHT (LB)	HMS1	HMS2	TURNINGS
9	1,850	725	475	250
9	2,300	900	600	350
9	3,615	1,750	1,200	600
15	4,200	2,300	1,550	700
15	6,800	3,400	2,100	1,020
15	7,800	4,500	3,000	1,350

WEIGHT (LB)	LIFT CAPACITY HMS1 (LB)	DUTY CYCLE (%)
950	UP TO 400	75
1,300	UP TO 600	75
1,900	UP TO 750	75
2,415	UP TO 900	75
3,375	UP TO 1,100	75

**ALL OF OUR SOLUTIONS ARE PERFECTLY ADAPTABLE TO THE MACHINERY AND THE SPECIFIC REQUIREMENTS OF CONTRACTORS IN SEVERAL INDUSTRIES, SUCH AS THE PORT INDUSTRY.**

